

Installation instructions

Before installation begins

When laying the floor, the room temperature should be between + 18°C and + 25°C and the relative humidity in the room should be between 25% and 70%.

The floor material must be acclimatized in the room for at least 24 hours before laying the floor. The room temperature must be maintained for at least 72 hours after installation.

If there is underfloor heating, the subfloor must be flat and stable. Vinyl Locking Comfort may be exposed to a maximum of 27°C.

Subfloor

The subfloor must be clean, sufficiently dry, even, stable, free from cracks, irregularities and failure. For flatness, Hus AMA class A applies (+ - 3 mm at 2 meters / + - 1.2 mm at 25 cm).

When laying on concrete, RF max 85% measured according to industry standards applies. Remember to remove dust and loose dirt, stains from paint, oil and the like. Smooth out any irregularities with putty or leveling compound with a suitable strength for the activities in the room.

Installation

Before you start laying the floor, make sure that the last row does not become narrower than about 5 cm.

The floor must be installed floating and must not be fixed with rails, walls, railings, fixed furnishings or the like. Ensure that there is sufficient range of motion around and also at pillars, stairs, door frames, thresholds or pipes. The floor must be able to move freely, leaving an expansion space of 5-7 mm for rooms up to 100 sqm and 7-10 mm for larger areas.

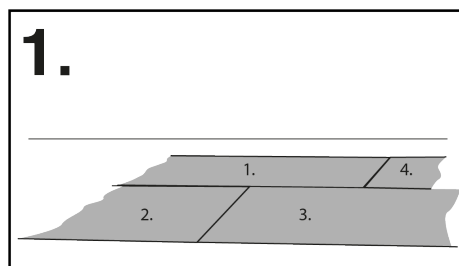
Maximum laying area 400 m² with maximum length or width 20 meters. For passage between different surfaces, L-shaped or similar, a dilation strip may be needed. Contact Idé Flooring if you are unsure. The minimum distance between the short joints must be 15 cm.

Check that you have received the correct product and that all material is from the same batch, also check that the material has no visible defects. Incorrect material is replaced with new material of the same type. Materials installed with visible defects are considered accepted and thus do not entitle to a complaint.

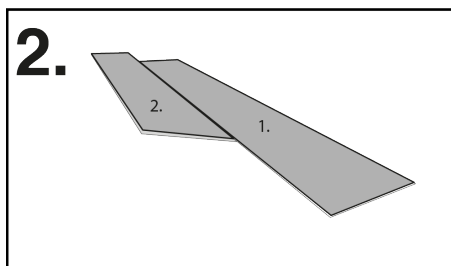
If office chairs are used, they must be fitted with soft slide wheels type W in accordance with DIN 68131. All other furniture / furnishings must be fitted with felt pads. These should also be checked at regular intervals so that gravel or other dirt that can scratch the floor does not stick.

The newly laid floor must be covered if further construction work is to be done. Use diffusion-open cover material in accordance with Hus AMA and GBR's technical advice.

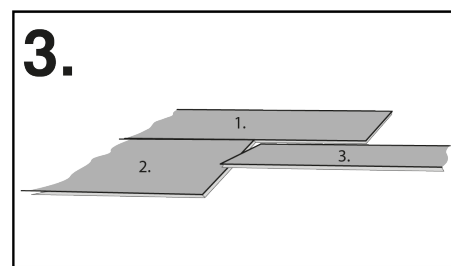
Do not tape directly to the Vinyl Locking panels.



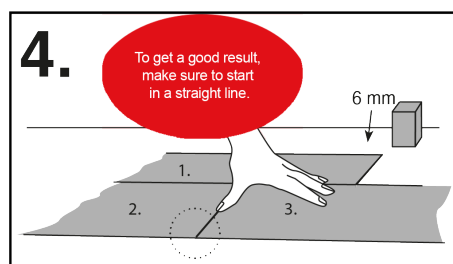
1. Assemble the tiles in the order of the numbers.



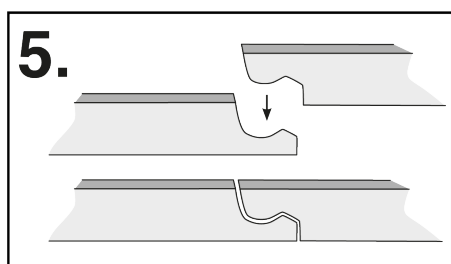
2. Start by clicking two long sides together. Use a laying tool to get the right angle when the tiles are clicked together.



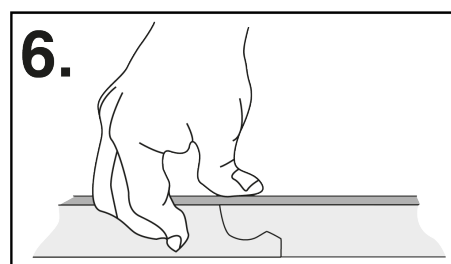
3. Continue with the next plate. Place the long side first.



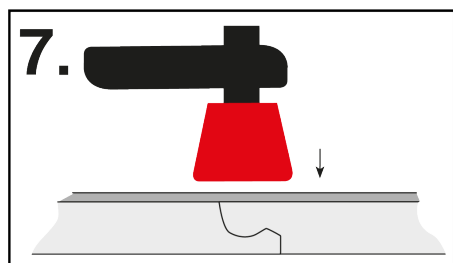
4. Press the short end of the tile straight down. Leave a 6 mm gap (movement joint) against the wall around



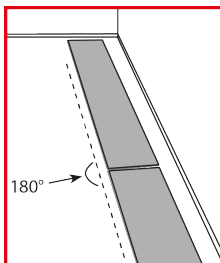
5. Clarifying picture of how the short end of the plate should be pressed straight down.



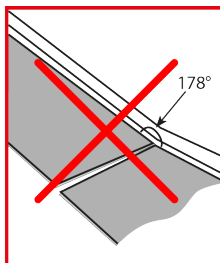
6. Squeeze with your hand / fingers.



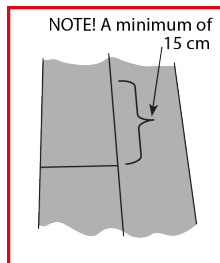
7. Gently tap with a rubber mallet and make sure the plates are locked.



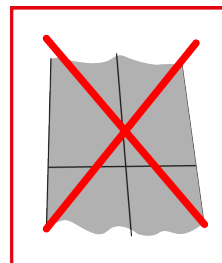
Lay the tiles straight.



Do not follow the wall unless it is completely straight.



NOTE! A minimum of 15 cm
The displacement of the transverse ridges must be at least 15 cm apart.



Do not lay the joints so they form a cross.

Important to remember:

- The floor must not be fixed to the building structure with rails, silicone, railings, etc.
- The floor level tolerance level must keep House AMA Class A + - 3 mm at 2 meters / + - 1.2 mm at 25 cm.
- The floor must be laid on hard, smooth, even and non-sagging surfaces.
- The floor must be acclimatized at least 24 hours before laying.
- The floor must be stored horizontally.
- Check that the floors are not damaged or visible before installation.
- Leave expansion space of 5-7 mm up to 100 m². Over 100 m² is left 7-10 mm. This is so that the floor can move.

Guarantee

Validity

Idé Flooring Sverige AB provides a 10-year warranty on the wear layer and a 2-year product warranty. The guarantee applies from the date of purchase.

Exception

The guarantee does not apply if:

- Floors with visible beauty defects or damage have been installed.
- The floor is not installed by an authorized specialist.
- Laying instructions not followed.
- Cleaning instructions not followed.
- The floor is fixed in the building structure.
- The floor is or has been exposed to solar heat more than 35°C.
- The subfloor does not hold Class A + - 3 mm at 2 meters or + - 1.2 mm at 25 cm.
- The floor has been exposed to scratches, paint spills, abnormally heavy loads, mechanical damage, hydraulic pressure (such as lifts, trucks, etc.).
- The floor is laid with a passage between different rooms.
- The floor has not been installed on hard, even, smooth, non-failing or incorrect surfaces.
- The floor was laid on concrete with RF over 85%.
- Floor protection under office chairs with wheels has not been used.
- You do not have furniture paws under the chair legs.
- The area is over 400 m².
- Any underfloor heating exceeds 27°C.